

■ **The Friend of the Collection**

The Collection of Nova has flourishing international friends. Lectures, discussions, shows and exhibitions on a specific subject as well as guided tours are held on a regular basis.

■ **Guided tours**

Guided tours can be arranged. Organizers should contact the Museum Administrator (ph. 0362.364200). Guided tours are also available in English, French, German, Spanish, upon reservation.

■ **Groups visits**

Groups are restricted to 30 people, and organizers are requested to book in advance to avoid overcrowding. The persons in charge are asked to make themselves know to the staff at the desk on arrival and to assume responsibility for their part.

■ **Photography**

Cameras with or without flash, tripods and video cameras are not admitted inside the Collection.

■ **Orari di apertura - Opening hours:**

La Collezione Permanente è aperta (esclusi Luglio e Agosto) nei seguenti orari:

The Collection is open (except July and August) at the following times:  
 Sabato-Saturday 15.30 - 18.30  
 Domenica-Sunday 10.00 - 12.00 / 15.30 - 18.30

È possibile concordare aperture speciali per gruppi oppure in particolari occasioni - It's possible to arrange a special opening for groups of for special events.



**Città di Nova Milanese**

Nova Milanese (MB) - Via Villonesi, 34 - tel. +39.0362.374252 - fax +39.0362.41775  
 www.comune.novamilanese.mb.it - email: comune@novamilanese.it

**Ufficio Culturale:**

tel. +39.0362.43498 - fax +39.0362.43375 - ufficio.cultura@novamilanese.it

**Associazione Culturale Impronte**

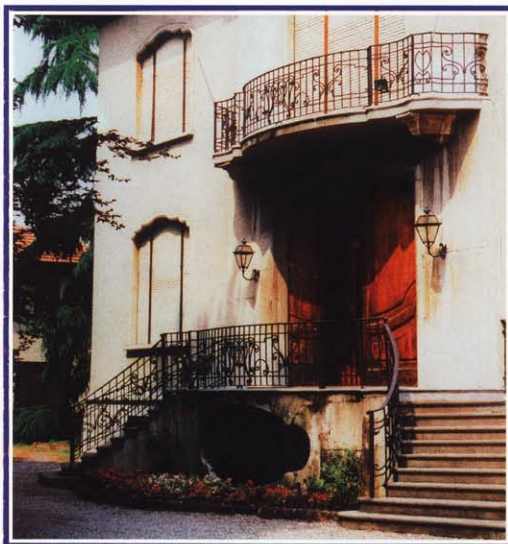
Nova Milanese (MB) - Via Giussani, 3 - tel./fax +39.0362.364200

www.associazioneculturaleimpronte.com

e-mail: info@associazioneculturaleimpronte.com

Official sponsor **Hobbyceram**

Milano - Via PL. da Palestrina, 13 - tel. +39.02.66981271 - fax +39.02.66981812



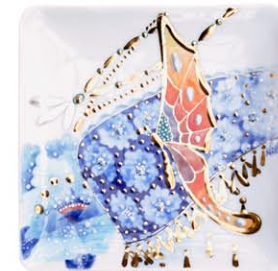
**Collezione Permanente delle Arti del Fuoco**

**Donazione del Pittore Vittorio Viviani**

**Villa Vertua**

I - 20054 - Nova Milanese (MB) - Via Garibaldi, 1

090031



**Collezione permanente delle Arti del Fuoco**

<http://www.comune.novamilanese.mb.it/>

[http://www.comune.novamilanese.mb.it/la\\_citta/musei/pagina1.html](http://www.comune.novamilanese.mb.it/la_citta/musei/pagina1.html)

